



BROADMEADOW HOUSE ACCOMMODATION

ABOUT THE PROPERTY

Broadmeadow House is a semi-autonomous property developed for participants that wish to engage in a rental property with a higher degree of self determination.

The property has been developed with the sole purpose to allow participants who have been developing living skills within other properties to transition into greater independence as independently as possible with the availability of neighbouring staff on site and available when required for daily check ins and management of accommodation.

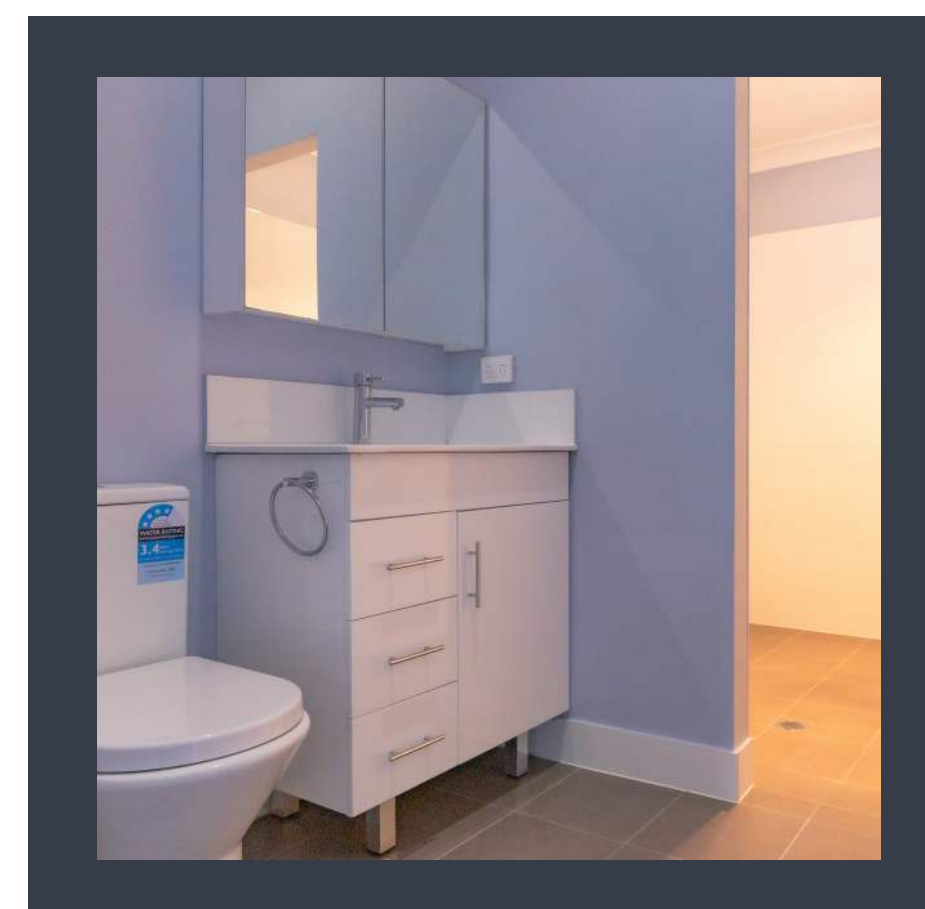
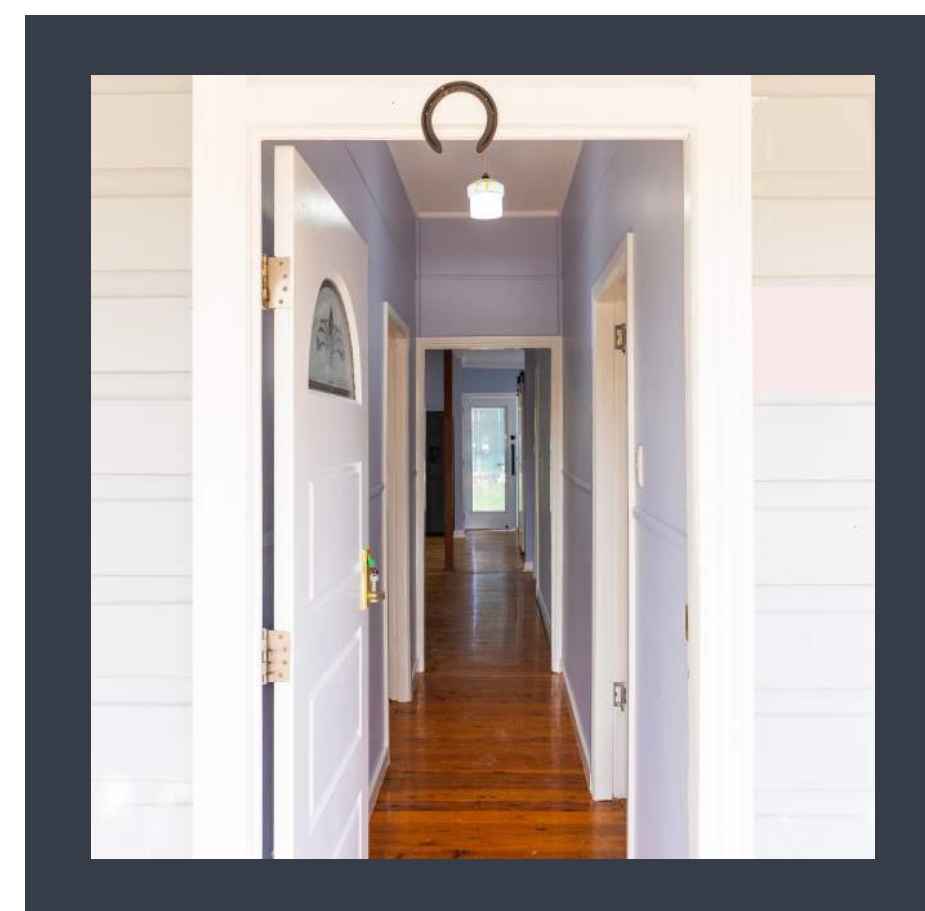
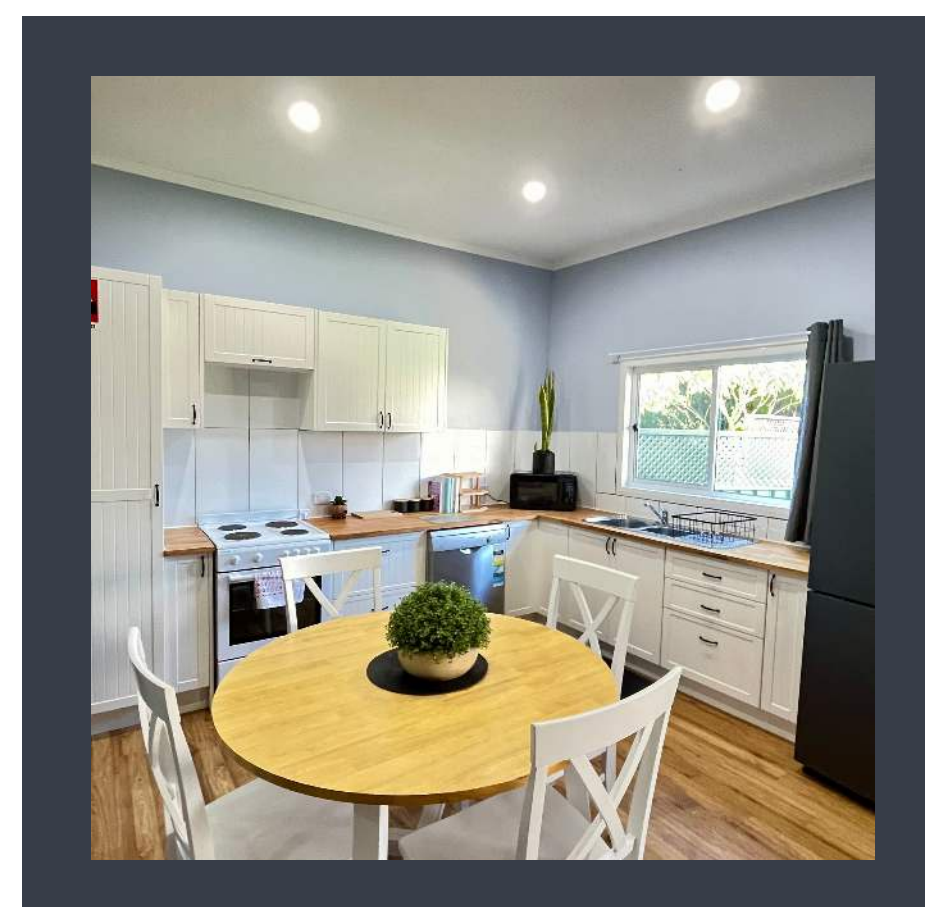
ACCOMODATION FEATURES

- 2 Participant Bedrooms (couples welcome)
- 1 Staff Room allocated for sleepover and day supports as required
- 2 Bathrooms
- Large Backyard
- Pet Friendly (on agreement)
- Fully Furnished (fridge, washing machine, kitchen supplies..etc)
- Residents can bring their own items for the room if they wish including bed and linen

Great Public Transport
Broadmeadow Train Station & Bus Routes



ENQUIRE NOW



admin@murupathways.org.au

0400347706

